



# Birchland Elementary School

## E-News

1331 Fraser Avenue, Port Coquitlam, BC V3B 1M5

Phone: 604-941-3428 Fax: 604-941-7952

[www.sd43.bc.ca/elementary/birchland](http://www.sd43.bc.ca/elementary/birchland)

[birchland@sd43.bc.ca](mailto:birchland@sd43.bc.ca)

Mr. Frank Pearse, *Principal*

Birchland E-News Volume 2012 – 18

December 17, 2012

---

### Principal of the Matter – [fpearse@sd43.bc.ca](mailto:fpearse@sd43.bc.ca)

Although it was thousands of miles away, the tragic events that occurred last Friday morning at Sandy Hook Elementary School in Connecticut had a profound effect on all of us here at Birchland Elementary. The lives lost and future emotional toll to others will directly impact on thousands of lives for many years to come. As my own children are still quite young my wife and I made the decision not to discuss this event with them, and hope that the innocence of childhood can be maintained for them for a few more years. However, it is inevitable that many children will learn about what has happened, and will need assistance in processing the event, and feeling safe in the future.

An article from the Crisis Management Institute that offers some excellent advice for parents [can be found here](#). If you sense your children are struggling to process the events and are looking for some assistance in discussing this with them I would highly recommend you take the time to take a look.

If you have any concerns about your child's processing of this event, or notice any concerning changes in their behavior, please do not hesitate to contact me at the school to discuss how to best help them.

---

### Friday, December 21<sup>st</sup>

This coming Friday (Dec 21, 2012) we are going to have a **pancake breakfast** for all students between 9 and 10 A.M. We would recommend that students do still eat breakfast before coming to school but all will also receive pancakes in the morning.

Although certain classrooms are having their own pajama days earlier in the week, Friday will also be a **school-wide Pajama day**. Please remember that students will still be heading outside for recess and lunch, so please ensure they have a warm coat and boots with them to keep warm.

Between recess and lunch we will also be having our **annual carol sing-along** in the gym. In the past many families have chosen to take their children home for an early start to the Christmas holiday. If you are planning on doing this please ensure you communicate this to your child's teacher so that they know who will be present in the afternoon. Students who choose to stay at school will be dismissed at our regular time (2:55)



---

### Christmas Concert – This Thursday

children perform!

Our school's Christmas concert will take place this Thursday, December 20<sup>th</sup>, 2012. This year we will have an afternoon performance at **1:30 PM – Which will be our DRESS REHEARSAL with students in attendance and an evening performance at 6:30 PM (doors open 5:30)**. Please mark this date on your calendar so that you have the chance to come and join in the celebration and watch your

The Birchland PAC will be running a bake sale during the evening performance, so please bring a little extra cash to help support our PAC.

---

## Two Weeks at a Glance ([Click for the full Birchland Calendar](#))

December						
S	M	T	W	T	F	S
						1
2	3	4	5	6	7	8
9	10	11	12	13	14	15
16	17	18	19	20	21	22
23	24	25	26	27	28	29
30	31					

- Dec 18 –Lunch Lady (participation optional)
- Dec 18 – Gingerbread houses DRAW @ 2pm
- Dec 19 – Mrs. Crawford’s class making gingerbread houses
- Dec 19 – December Birthday Club
- Dec 20 – BPAC Bake Sale (before both concerts; day and evening)
- Dec 20 – Christmas Concert; 1:30 pm DRESS REHEARSAL and 6:30 pm EVENING CONCERT
- Dec 21 – Last day before winter break (children can be picked up at 12 pm/noon with written permission)
- **Dec 21 – PANCAKE BREAKFAST AND WEAR YOUR PJ’**
- Monday, January 7<sup>th</sup> – School is open

---

## School Registration for September 2013

New information is now available on our school website for September 2013, the information is located in the ‘Registration’ section which is under the ‘Parents’ tab, or just [click here](#). Along with the registration info for Kindergarten for 2013 there is also information for the following programs:

- Early French Immersion
- Late French Immersion
- Early Entry Montessori
- Late Entry Montessori
- Reggio Emilia Program
- Mandarin Program
- Ready Set Learn Program

In the new year there will also start communicating with our grade 5 families about transitioning from Birchland to Middle School.

---

## LOST & FOUND

We have a number of clothing, etc. that have been misplaced by students over the last term. The items will be on display in our hallway during the last week of school. Please check out this clothing when you are next in the school. Any unclaimed items will be sent to those in need at Christmas.



---

## CODE YELLOW LOCKDOWN PRACTICE –

Last Friday morning Birchland completed a Code Yellow Lockdown practice drill. As communicated to parents prior to the event we conducted the drill at 9:15 A.M. The drill was very successful and helped us to better understand the procedures we would use in an emergency situation.

---

## All About Me

Registration for the January session of “All About Me” is now complete and confirmations sheets will be sent home with students this week. There are still spots available on a few specific days. If your child is interested in registering please contact Mr. Pearse.

---

## SD 43 District Meal Program

We are pleased to once again offer the services of the district's elementary school meals program to our Birchland students. Nutritious lunches, prepared at the Centennial teaching kitchen, under the direction of the teaching chef, a culinary assistant and school meal coordinators, will be delivered to our school each day. For the menu and order form, please click [here](#).

---

## Cold Weather Recess



Looking at the extended forecast it appears that we will see the temperatures fall and maybe even some snow this coming weekend. When the weather is cold please ensure your children are dressed appropriately to be outside for up to 30 minutes when they are coming to school. Unless there is a substantial amount of ice, or large slushy puddles we will continue to be outside with the children at both recess and lunch time.

---

***Christmas, my child, is love in action. Every time we love, every time we give, it's Christmas.***

*Dale Evans*

---

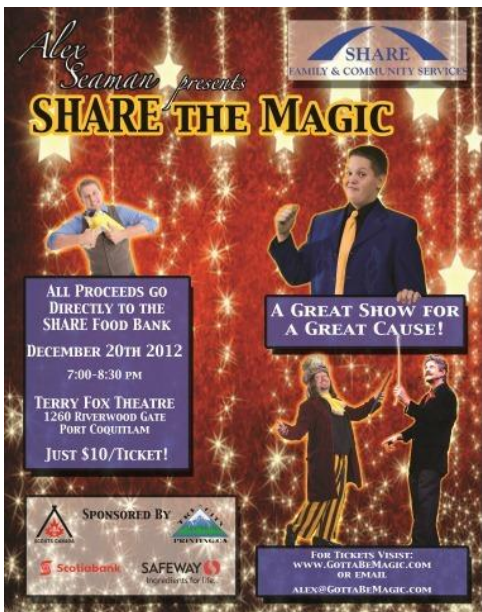
## Community Information

The following groups have requested that we distribute information regarding their community events. Although some of these activities may take place in School District 43 Schools we do not organize or endorse these groups or organizations, we simply pass along the information.

**PORT COQUITLAM LAUNCHES YEAR-LONG BIRTHDAY PARTY JANUARY 4<sup>TH</sup>, 2013. [Click here for more information.](#)**

**Coquitlam Express – latest [newsletter](#)**

**Fine Art Winter Programs at the Evergreen for Children & Adults. [Click here](#)**



You are invited to attend the 3rd Annual "Share the Magic" family magic show on Dec. 20th at 7:00 pm at the Terry Fox Theatre.

All proceeds benefit the Share Food Bank. Tickets are only \$10.00.

See [www.gottabemagic.com](http://www.gottabemagic.com) for more information.

Please bring a non-perishable food item.

Invite your family and friends for a wonderful evening of magic.

Looking forward to seeing you there!

Merry Christmas

It's time... for a change!






## SCHOOL DISTRICT 43 VOCATIONAL PROGRAMS

Health Care Assistant      Medical Office Assistant  
Administrative Assistant    Building Service Worker  
Computerized Accounting    Dental Receptionist  
Interior Decorating

For information call 604.936.4261 or visit [www.vocationalprograms.ca](http://www.vocationalprograms.ca).



COQUITLAM  
CONTINUING Education


Face-to-face	Work and Learn	Upgrade your skills
		

**Study English! Free learning opportunities!**  
Join our Foundations English classes for adults which focus on basic reading, writing, speaking and listening skills. These classes also prepare students for high school credit courses.

---

**ONGOING REGISTRATION**  
Thursdays ONLY until December 20 . . . . . 4:00 - 7:00 PM

**PLEASE BRING:** ① Proof of Canadian Status  
② Photo ID    ③ Two proofs of BC residency



**MONTGOMERY ADULT LEARNING CENTRE**  
380 Montgomery Street, Coquitlam  
British Columbia, V3K 5G2  
For more information call or visit our web site  
604.936.4261 | [www.ce43.com](http://www.ce43.com)